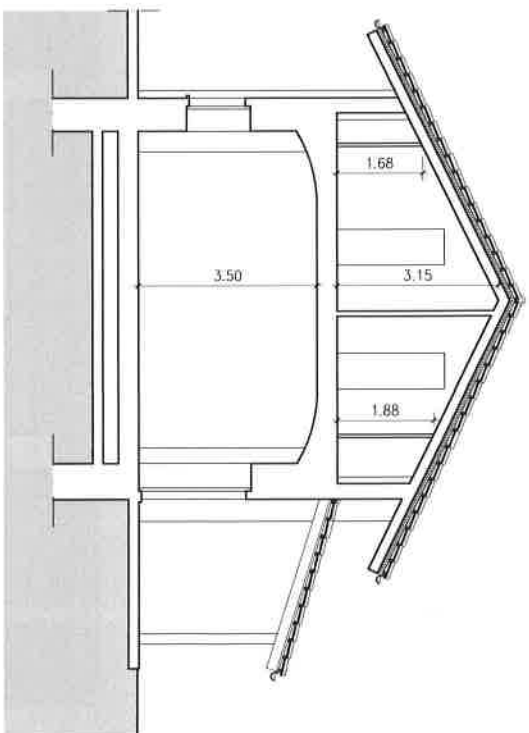
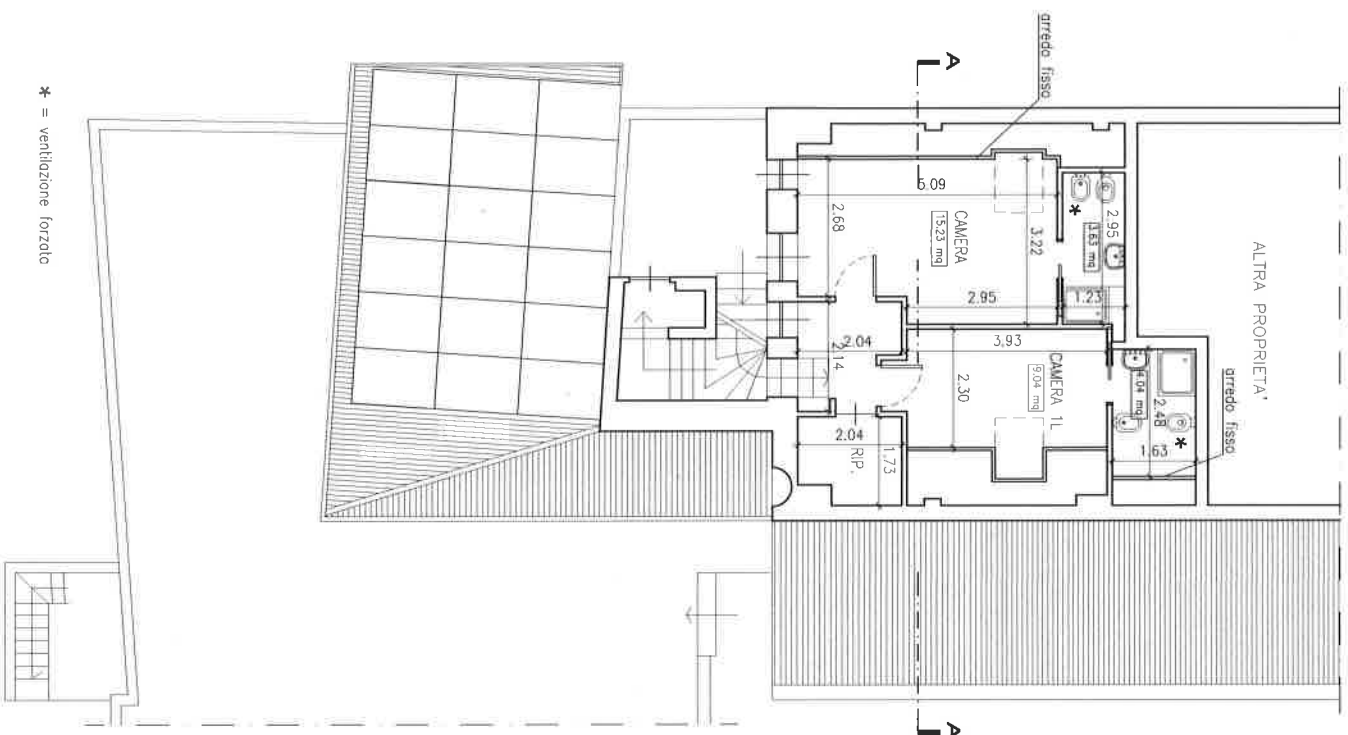


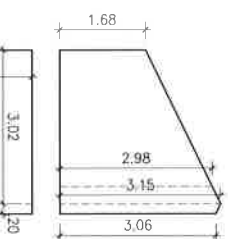
PIANO PRIMO (SOTTOTETTO) situazione finale

SEZIONE A-A situazione finale



CALCOLO ALTEZZA MEDIA LOCALI SOTTOTETTO

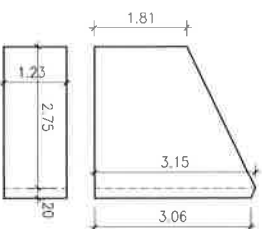
CAMERA



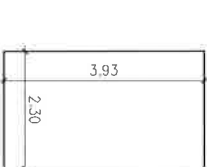
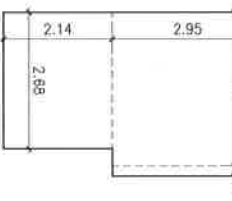
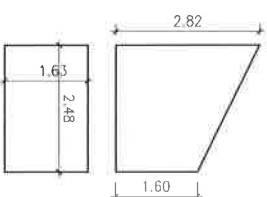
CAMERA 1L



BAGNO



BAGNO



SUPERFICIE

ALTEZZA MEDIA

VoI./Sup.

SUPERFICIE
 $3.02 \times 2.95 + 0.20 \times 2.95 +$
 $+ 2.14 \times 2.68 = \text{mq } 15.23$
VOLUME
 $8.91 \times (1.68 + 3.15) / 2 +$
 $+ 0.59 \times (3.15 + 3.06) / 2 +$
 $+ 5.73 \times (1.68 + 2.98) / 2 = \text{mc } 36.70$
ALTEZZA MEDIA
VoI./Sup. $36.70 / 15.23 = \text{m } 2.41$

SUPERFICIE
 $(3.01 + 1.88) / 2 \times 3.04 = \text{mc } 22.10$
ALTEZZA MEDIA
VoI./Sup. $22.10 / 9.04 = \text{m } 2.44$

SUPERFICIE
 $1.23 \times 2.95 = \text{mq } 3.63$
VOLUME
 $3.38 \times (1.81 + 3.15) / 2 +$
 $+ 0.25 \times (3.15 + 3.06) / 2 = \text{mc } 9.16$
ALTEZZA MEDIA
VoI./Sup. $9.16 / 3.63 = \text{m } 2.52$

SUPERFICIE
 $1.63 \times 2.48 = \text{mq } 4.04$
VOLUME
 $4.04 \times (2.82 + 1.60) / 2 = \text{mc } 8.93$
ALTEZZA MEDIA
VoI./Sup. $8.93 / 4.04 = \text{m } 2.21$

VERIFICA DELLE SUPERFICI FINESTRATE

descrizione spazi	superficie in progetto	1/8 superficie	sup. finestra utile in progetto	calcoli	totale
CAMERA	15.23 mq	1.90 mq	0.94x1.20+0.60x0.80+		3.63 mq
CAMERA 1L	9.04 mq	1.13 mq	0.94x1.20		1.13 mq
BAGNO	3.63 mq	0.45 mq	ventilazione forzata		
BAGNO	4.04 mq	0.51 mq	ventilazione forzata		

* = ventilazione forzata